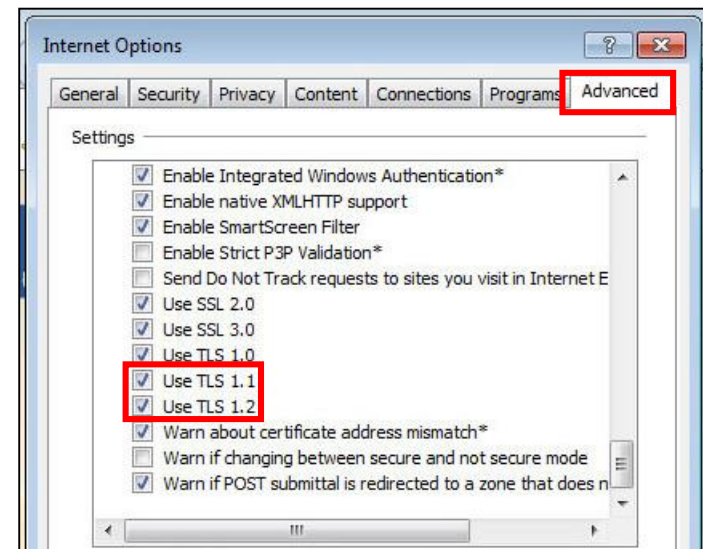
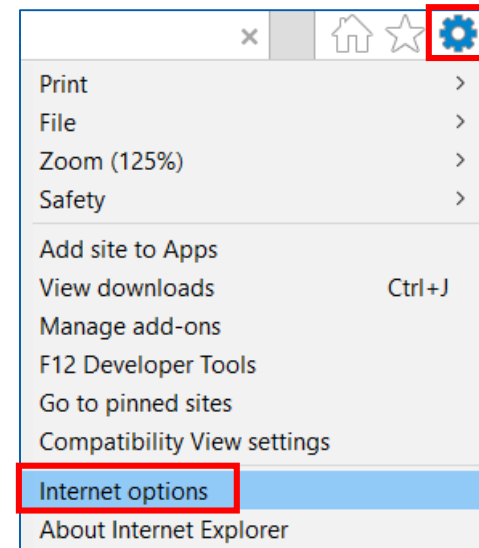


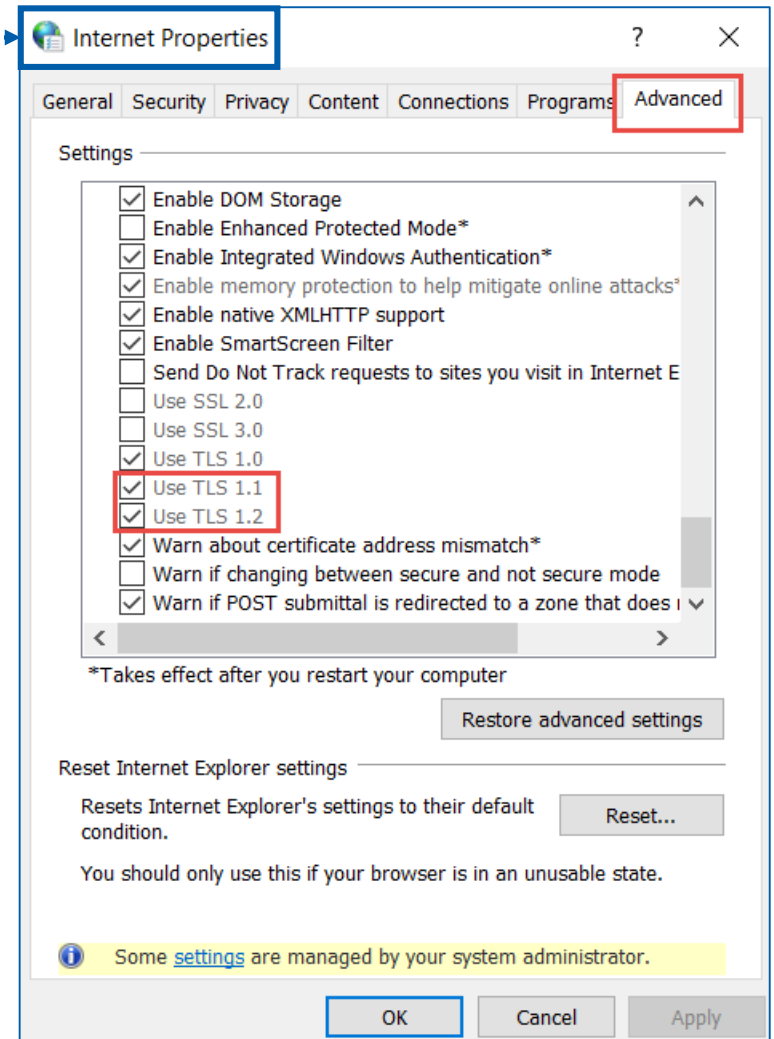
Changing Internet Explorer Settings for HTTPS Connectivity

1. Open **Internet Explorer**
2. Click the **gear icon** in the upper right hand corner of the browser
3. Click **Internet Options**
4. Select the **Advanced** tab
5. Scroll down to the Security category, manually check the option box for **Use TLS 1.1** and **Use TLS 1.2**
6. Click **OK**



Changing Google Chrome Settings for HTTPS Connectivity

1. Open **Google Chrome**
2. Click **Alt F** and select '**Settings**' from the dropdown
3. Scroll down and select '**Show advanced settings...**'
4. Scroll down to the Network section and click on '**Change proxy settings...**' to open **Internet Properties**
5. Select the **Advanced** tab
6. Scroll down to the Security category, manually check the option box for **Use TLS 1.1** and **Use TLS 1.2**
7. Click **OK**



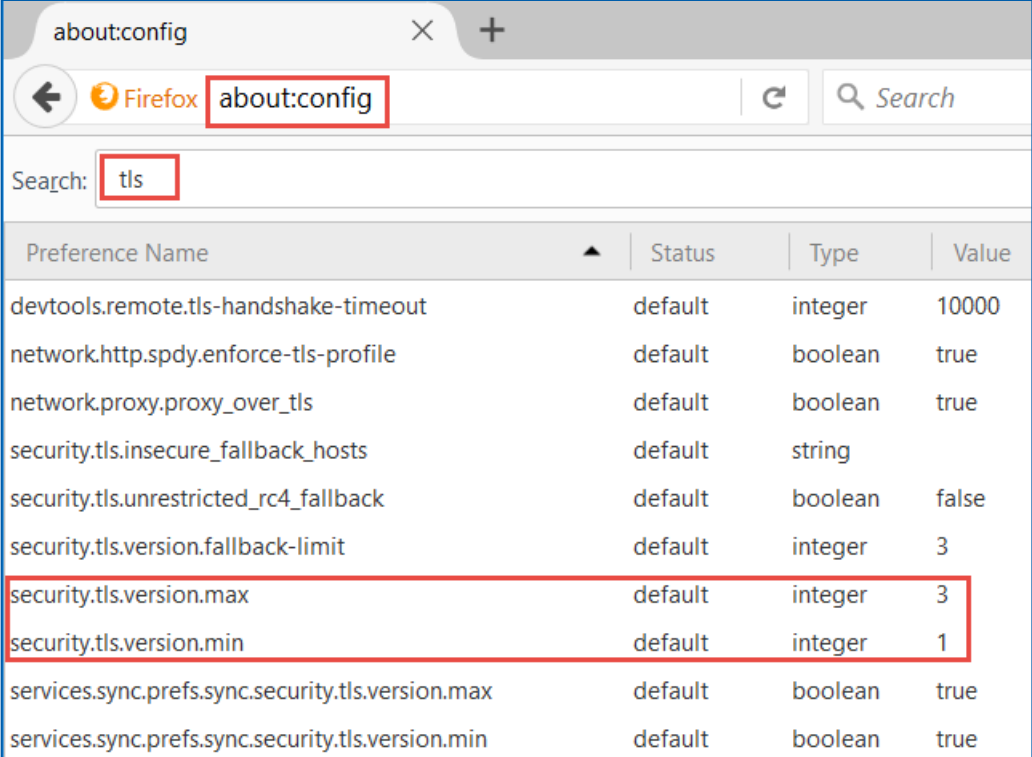
Changing Firefox Settings for HTTPS Connectivity

Please note that Firefox supports TLS 1.1 and 1.2 by default. You shouldn't need to make any changes, but you can double-check the settings by doing the following:

1. Open **Firefox**
2. In a new tab, type **about:config** in the address bar and press Enter/Return. Click the button promising to be careful
3. In the search box above the list, type **TLS** and pause while the list is filtered
4. If the **security.tls.version.max** preference is bolded and “user set” to a value other than 3, right-click > Reset the preference to restore the default value of 3
5. If the **security.tls.version.min** preference is bolded and “user set” to a value other than 1, right-click > Reset the reference to restore the default value of 1

The values for these preferences mean:

1=> TLS 1.0 2=>TLS 1.1 3=> TLS 1.2



The screenshot shows the Firefox 'about:config' page. The address bar contains 'about:config'. A search box contains 'tls'. A table lists various preferences. Two rows are highlighted with a red border: 'security.tls.version.max' with a value of 3, and 'security.tls.version.min' with a value of 1. The 'security.tls.version.max' row is bolded.

Preference Name	Status	Type	Value
devtools.remote.tls-handshake-timeout	default	integer	10000
network.http.spdy.enforce-tls-profile	default	boolean	true
network.proxy.proxy_over_tls	default	boolean	true
security.tls.insecure_fallback_hosts	default	string	
security.tls.unrestricted_rc4_fallback	default	boolean	false
security.tls.version.fallback-limit	default	integer	3
security.tls.version.max	default	integer	3
security.tls.version.min	default	integer	1
services.sync.prefs.sync.security.tls.version.max	default	boolean	true
services.sync.prefs.sync.security.tls.version.min	default	boolean	true